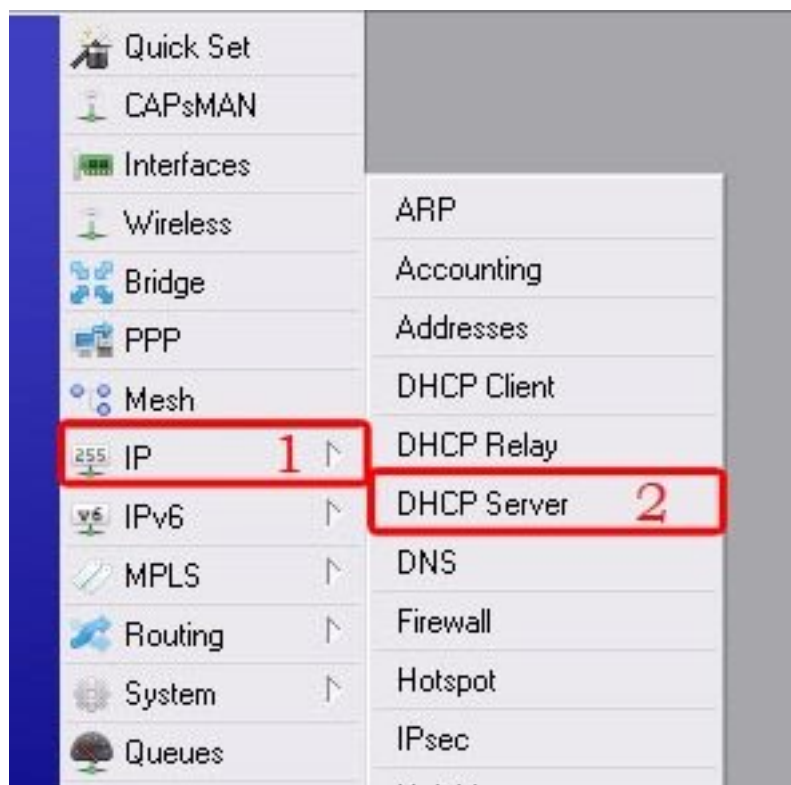


Set Mikrotik as DHCP Server (each Server Need One mikrotik dhcp server)

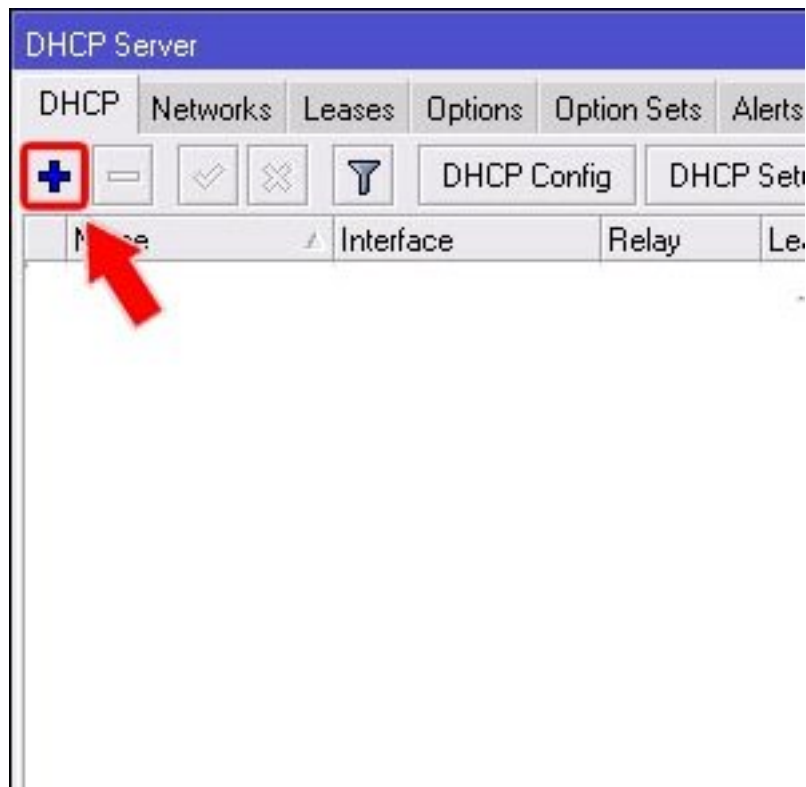
Install Mikrotik and set ip to it and Connect to it With Winbox :



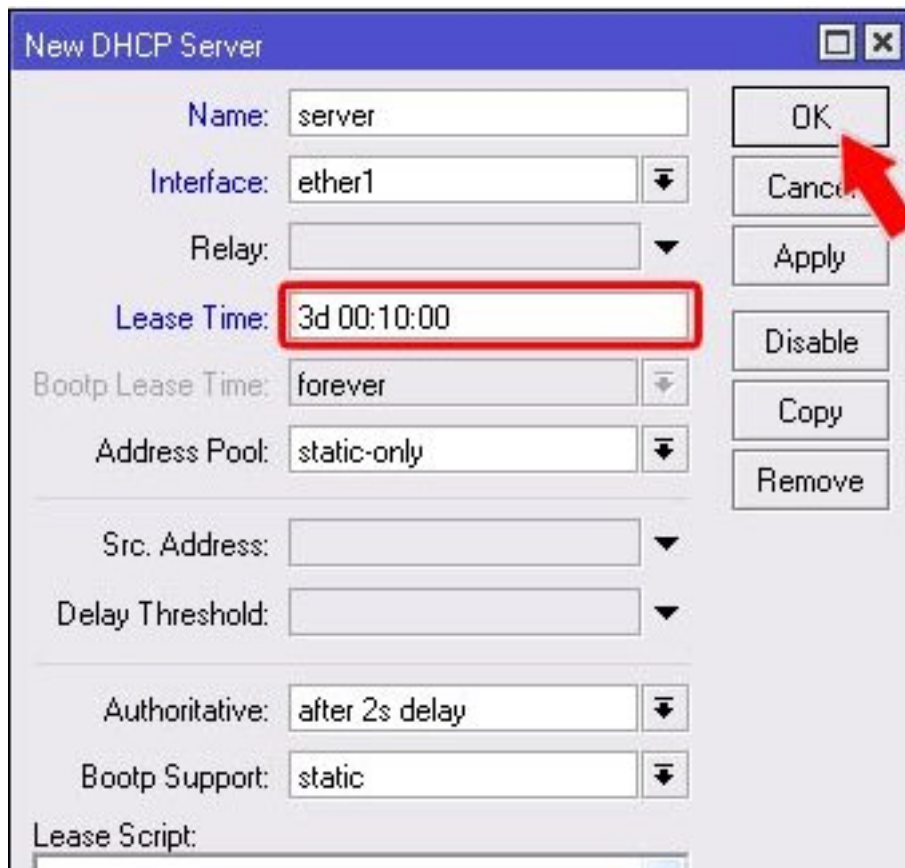
Select IP -> DHCP Server



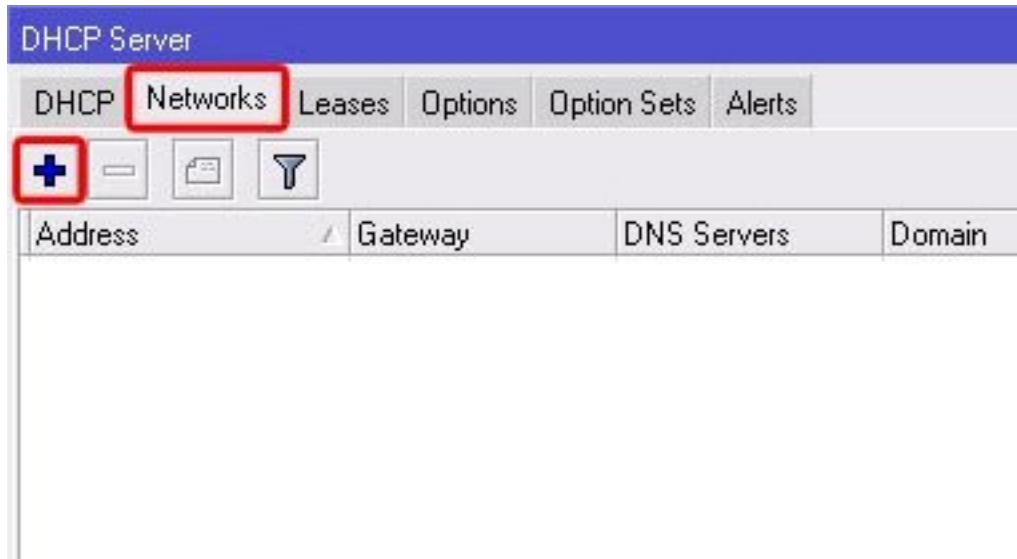
Click On Plus icon (like screen shot)



Set Info like screen shot And Click OK

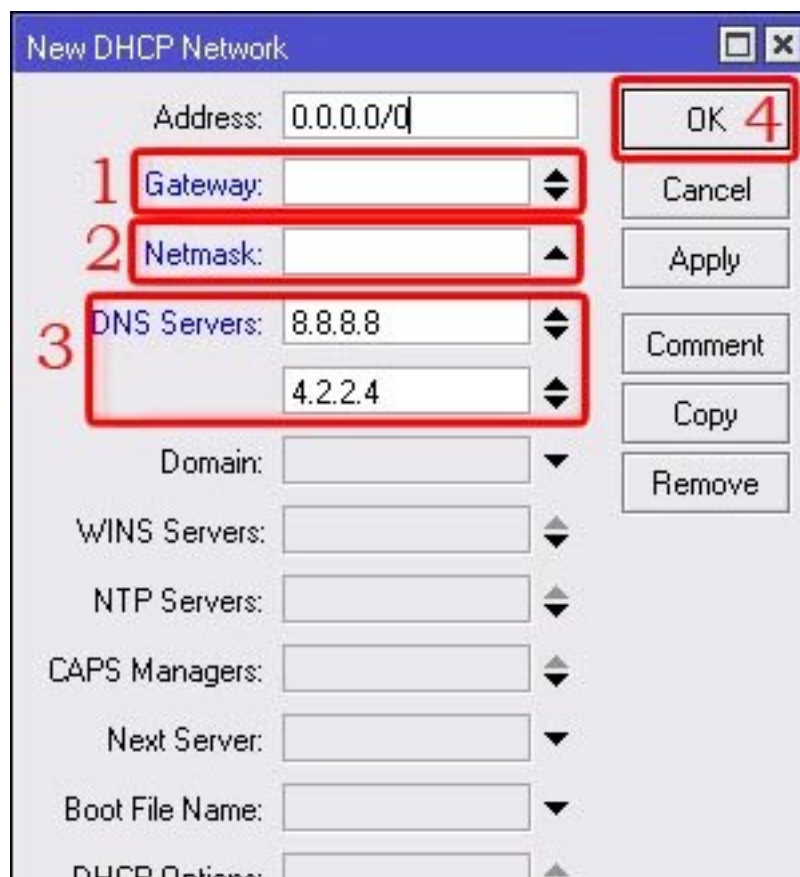


Select Network Tab



Set Info like screen shot And Click OK

(1 – Your IP's Gateway 2 – Your IP's Netmask)



Mikrotik Config Finished , You must enter mirotik ip and login detail in servers of panel

(edit servers)